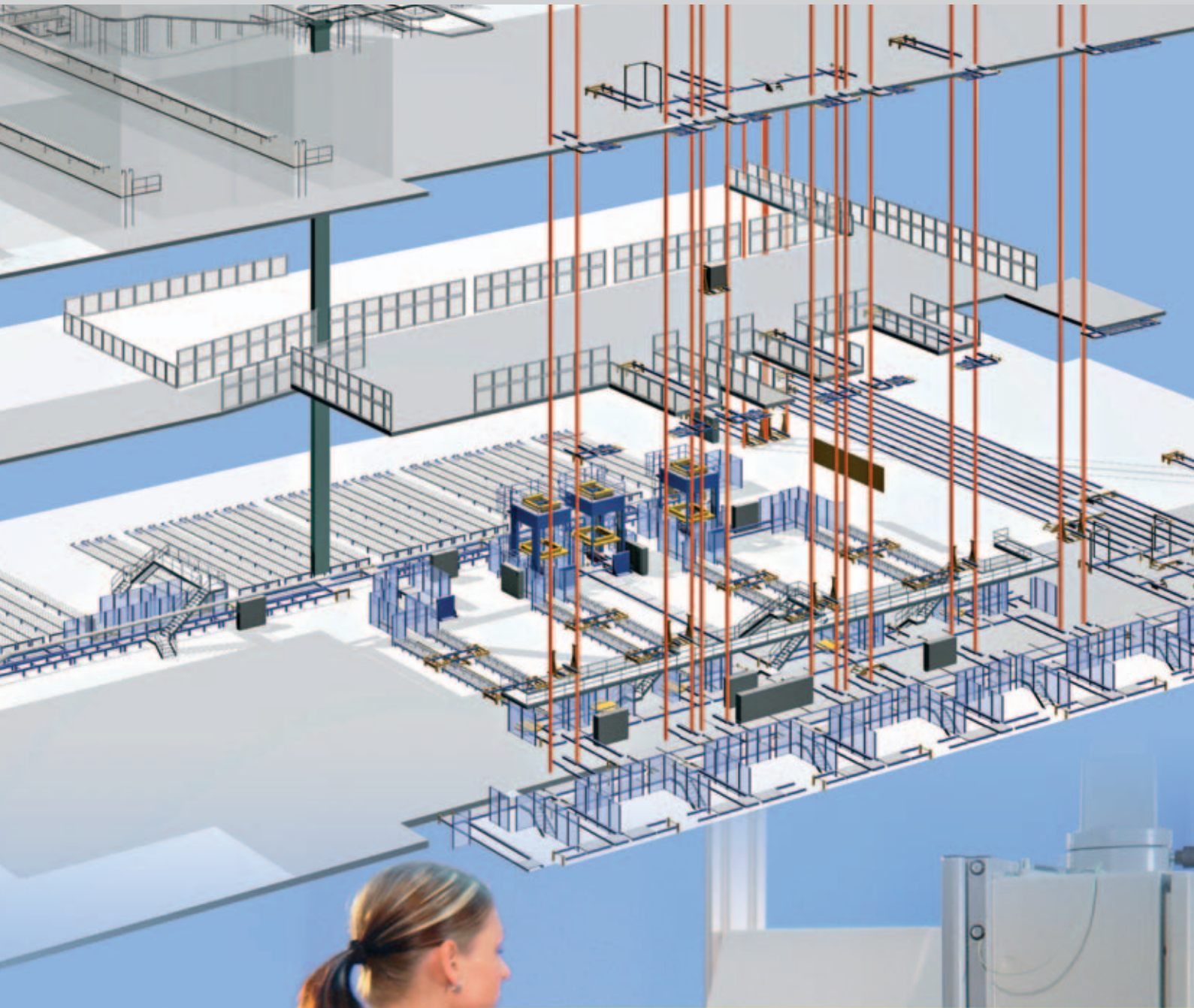


PLANNING AND CONSULTING

Global Logistic Systems Partner





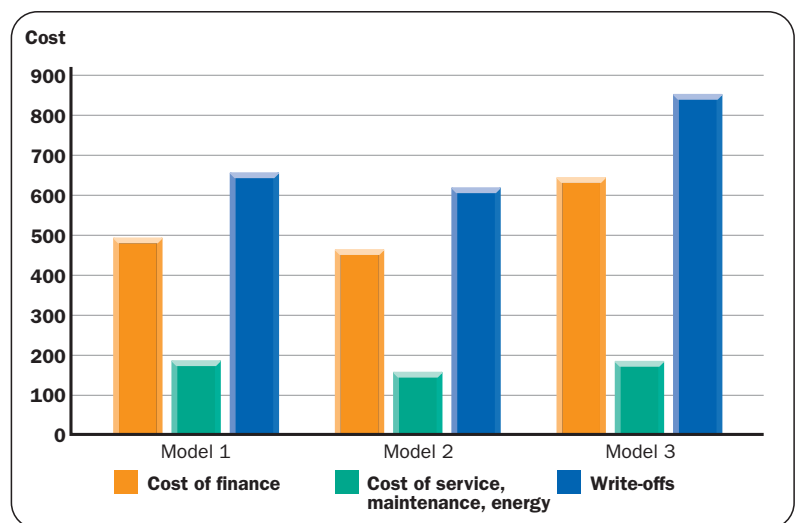
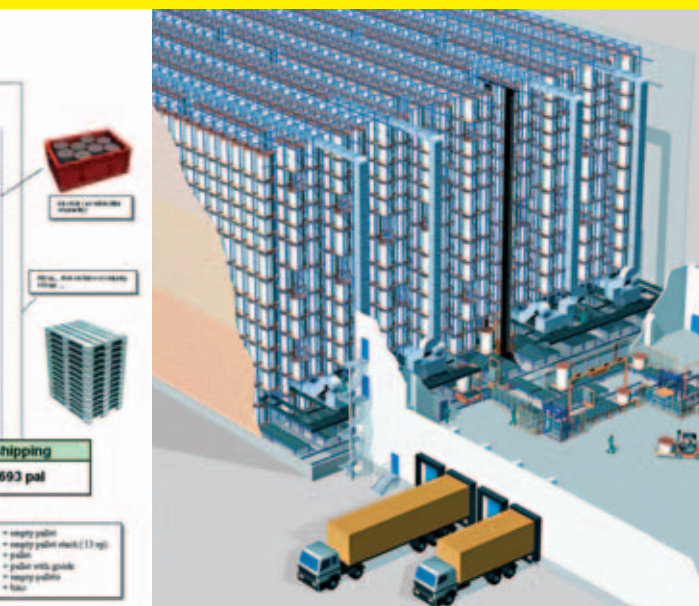
Planning dependability

Planning quality is improved through supporting analytical tools. Consequently, qualified statements on current logistics company ratios can be made, and first optimization approaches can be derived.

We carry out the detailed preparation of your specific logistics ratios under the aspect of operative execution. The results are evaluated in a joint workshop, where planning horizon and target quantity structure are defined as well.

This methodology leads to high planning dependability with regard to efficiency, functionality, and economic efficiency, both for SSI SCHÄFER and the operator.

- Data analysis
- System planning
- Detailed planning
- Process organization / IT concept
- Simulation studies
- Economy calculation
- Bid documents



Business planning means planning the future



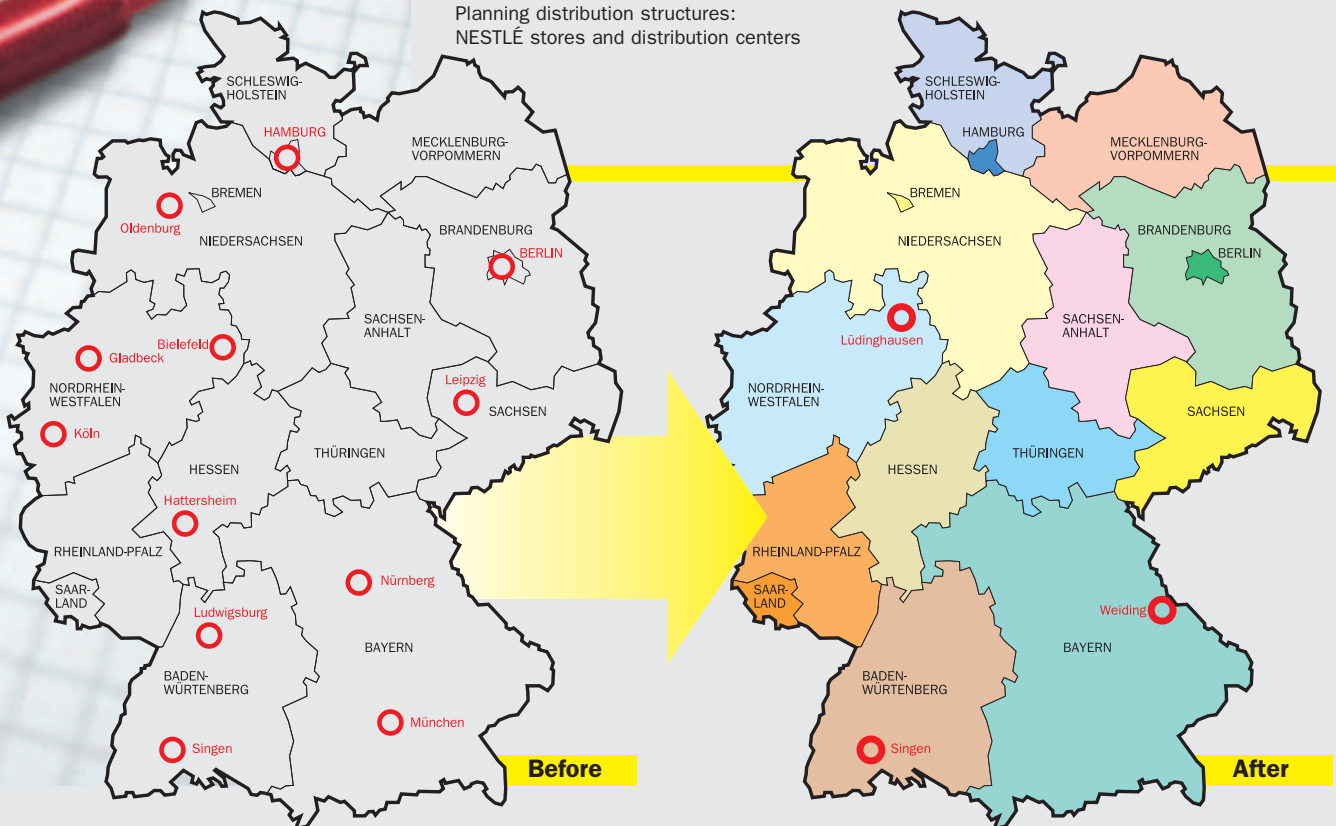
Each company has its own specific requirements with regard to logistics. Thus, successful planning requires the thorough analysis of the current situation. This is the only way to identify potential weak points and reveal savings possibilities.

Regardless of whether it concerns production or distribution logistics, in close cooperation with our customers, we develop economic concepts and visions in order to jointly plan the competition of the future.

In SSI SCHÄFER you will find a competent logistics partner, right from the start.

- Planning environment
- Inventory analysis
- Delivery structures
- Constancy of sales
- Order structures
- Production program
- ABC analyses
- Truck routing and scheduling

Planning distribution structures:
NESTLÉ stores and distribution centers



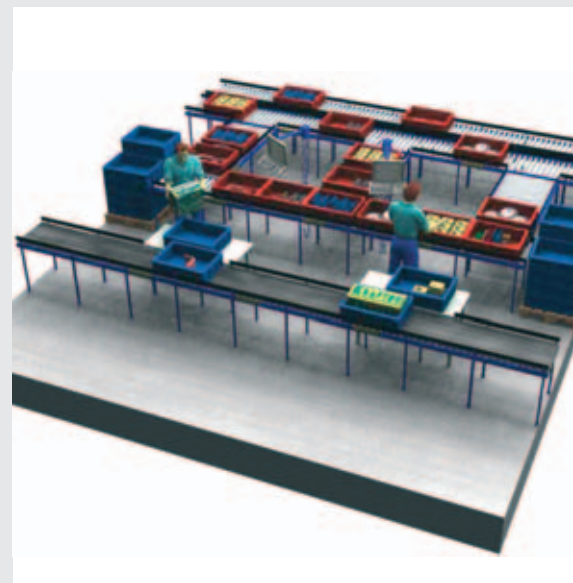
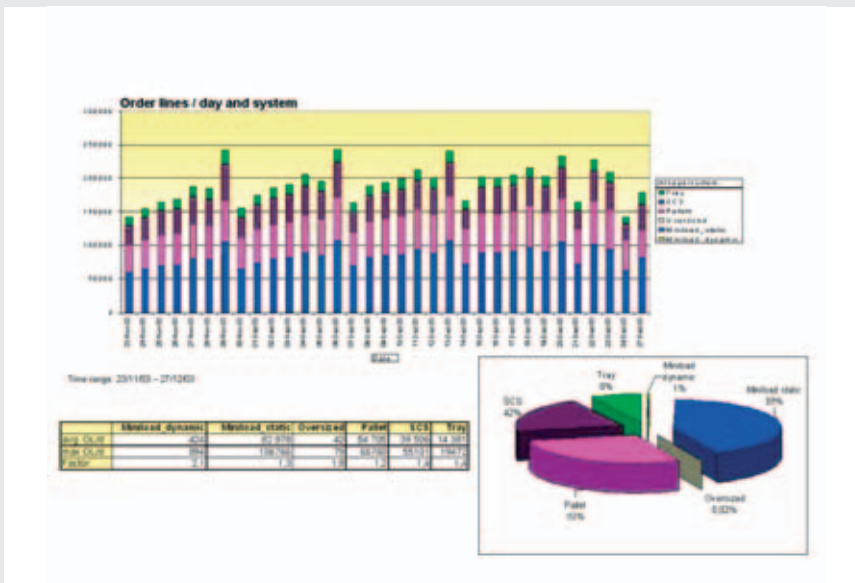
Step by step

From the global material flow to the order-picking process, we plan intelligent and economic logistics systems step by step, together with you. The design of layouts, processes, and material flow/order-picking technologies requires the close and communicative cooperation between the individual specialist divisions.

Our objective is the joint elaboration of an ideal solution for each individual planning project. Lateral thinking is more than welcome and will be encouraged.

In numerous successful planning projects, our methodical approach has proven to be effective.

We would like to help you build your future, too. We'll be there for you to give competent advice.



■ Layout planning:

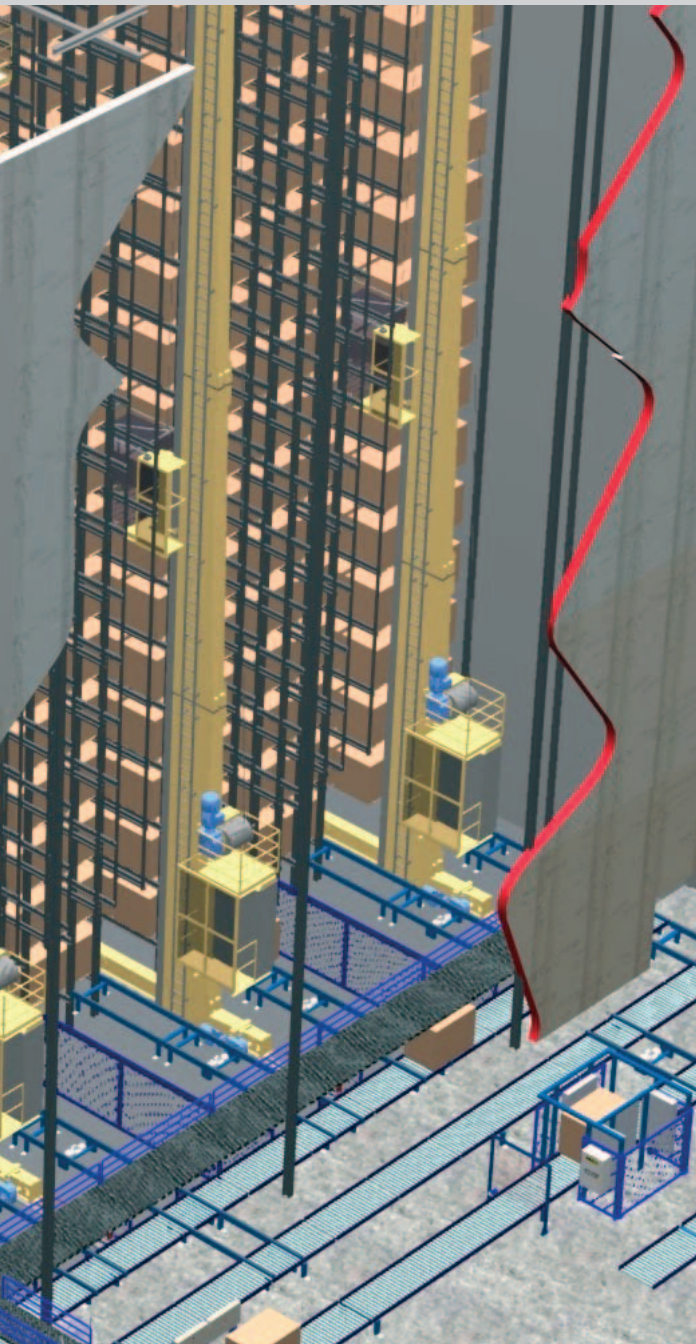
- Development of external transport links
- Plant traffic management
- Escape route planning
- Expandability
- Fire prevention concept

■ System planning:

- Warehousing
- Conveyor systems
- Order-picking principle
- IT concept
- Investments
- Operating cost
- Payback period

■ Order-picking principles:

- article-oriented
- order-oriented
- static staging
- dynamic staging
- serial order processing
- parallel order processing



Better safe than sorry

With regard to comprehensive systems, a simulation study is always worth the effort. Preparation of the necessary data means a lot of work and money. Anyway: neither do we want to make mistakes nor can we afford to make any.

Consequently, it makes sense to be "on the safe side" and to confirm and optimize the results by means of a simulation.

SSI SCHÄFER offers 100 % reliability.

- Simulation steps:
 - System abstraction
 - Data preparation
 - Model mapping
 - Computer simulations
 - Data evaluation
 - Final report

- Our tools

Plant

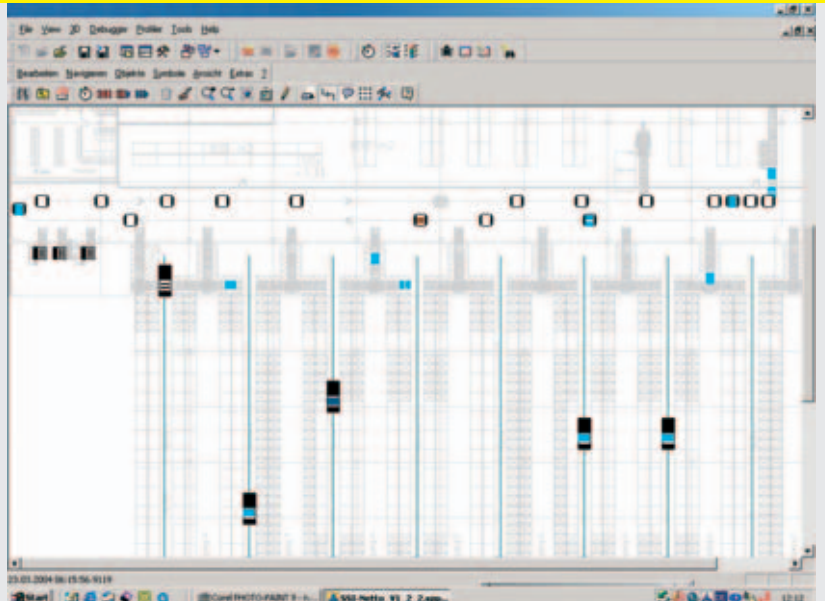
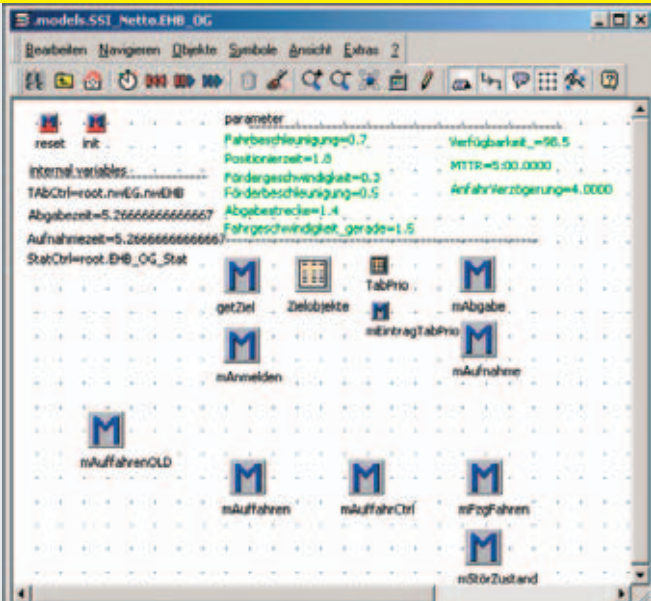
- Data evaluation

eM-Plant

- Simulation

taraVR
builder

- 3D animation
- 3D visualization
- 2D layout

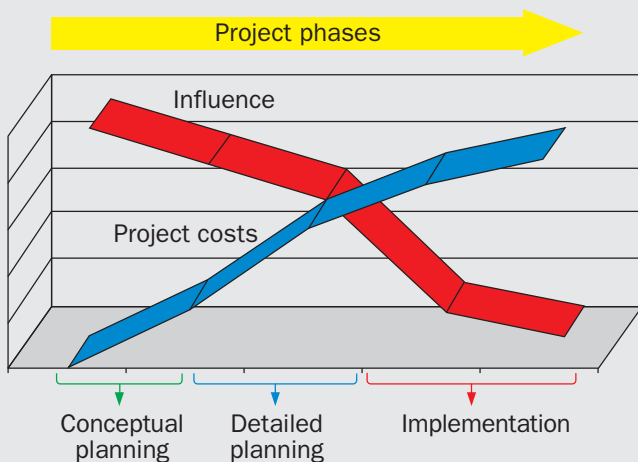


You can count on us

Investments in logistic systems have to meet the necessary requirements of economic efficiency and long-term securing of a company. Consequently, the best possible return on investment must be targeted.

At SSI SCHÄFER, engineering and business experts work together hand in hand to ensure that this objective is achieved. Already in the planning phase alternative actions are assessed with regard to their prospects for success as well as to their risks, and various methods of financing are compared.

Just to your advantage – remember: it's your money.



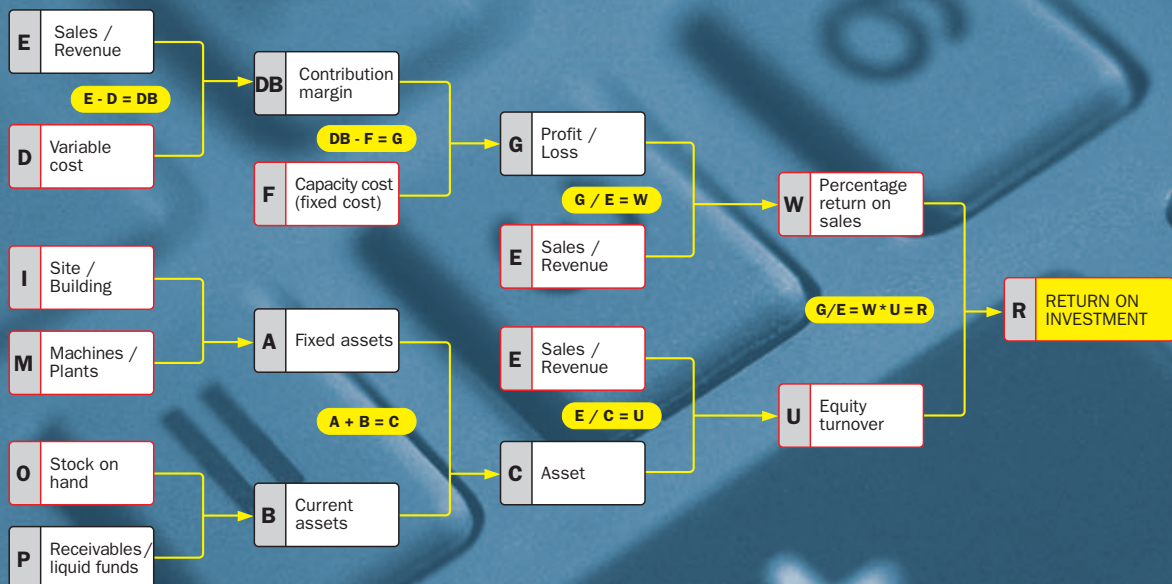
The effect investments have on operating costs

■ Methods:

- Average return method
- Profit comparison method
- Cost comparison method
- Computer simulations
- Data evaluation
- Final report

■ Process:

- Net present value method
- Calculating the payback period
- Internal interest rate





SSI Schäfer Noell GmbH

i_Park Klingholz 18/19
D-97232 Giebelstadt
Phone +49 / 93 34 / 9 79-0
Fax +49 / 93 34 / 9 79-100
info@ssi-schaefer-noell.com
www.ssi-schaefer.com

Salomon Automation GmbH

Friesachstraße 15
A-8114 Friesach bei Graz
Phone +43 / 31 27 / 200-0
Fax +43 / 31 27 / 200-22
office@salomon.at
www.salomon.at

SSI Schäfer Peem GmbH

Fischeraustraße 27
A-8051 Graz
Phone +43 / 316 / 60 96-0
Fax +43 / 316 / 60 96-457
sales@ssi-schaefer-peem.com
www.ssi-schaefer.com